

# Georgia Families 360°<sup>SM</sup>

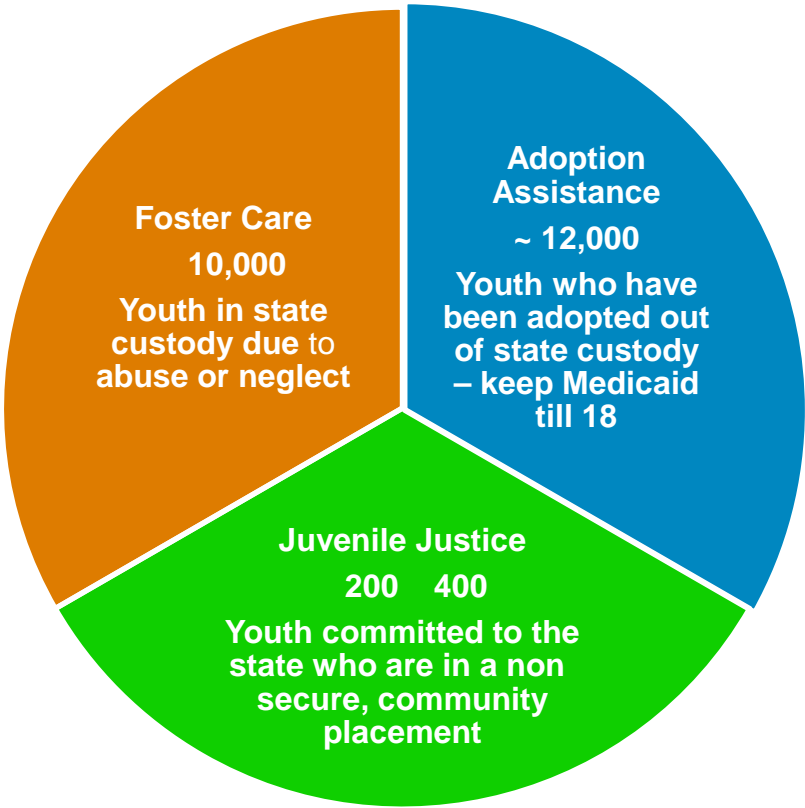
Information for Juvenile Courts  
and Law Enforcement



# Who is Amerigroup Georgia?

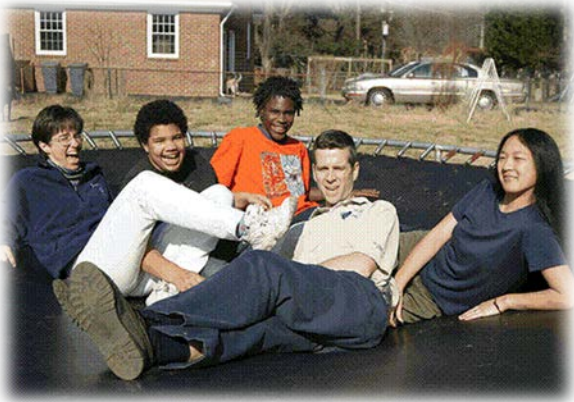
- Incorporated as AMGP GEORGIA MANAGED CARE COMPANY, INC.
- Amerigroup is a part of the Georgia Families Medicaid program administered by the Georgia Department of Community Health (DCH). DCH is Georgia's Medicaid authority.
- Amerigroup was chosen to be the single statewide care management organization (CMO) for the youth in the Georgia Families 360°<sub>SM</sub> program.
  - Georgia Families 360° is staffed separately from general Amerigroup CMO employees.

# Georgia Families 360° Populations



# Georgia Families 360°

- Integration of care on the physical, behavioral health, and dental needs of Georgia's children in foster care, receiving adoption assistance, and in juvenile justice community residential programs
- Improve health and well-being outcomes



# What's Different?

- Electronic Medical Records
- Care Coordination Team
- 24/7 Intake Line for members only
- Psychotropic Medication Oversight
- Standardized reporting and monitoring of health outcomes and key performance indicators
- Ombudsman for member advocacy



# DFCS/DJJ Responsibilities

Amerigroup works in partnership with DFCS and DJJ state agency staff.\*

DJJ will continue to make decisions regarding:

- Medical Care
- Placements
- Safety Issues
- Medication
- Transportation
- Service Choices



\* For children in foster care or juvenile justice

# How We Work with DFCS

- Youth enters Georgia Families 360° via foster care:
  - Amerigroup is notified by e-form from DFCS worker
    - AGP depends on timely and accurate information, via the E-form, from DFCS to be able to reach out to appropriate people
  - Youth is assigned to Care Coordinator (CC) and Outreach Case Specialist
  - Outreach Case Specialist works with DFCS CM to make initial appointments
    - Medical/Dental check within 10 days
    - Trauma Assessment completed within 18 days of entering care
    - Health Risk Screening within 30 days
  - Once these items are completed the Outreach Case Specialist's work is complete and the CC will be the primary contact

# How We Work with DJJ

- Select DJJ youth entering non-secure placement setting
- Amerigroup is notified via e-Form by Office of Federal Programs
- Youth is assigned to CC, based on placement location, and Outreach Case Specialist
- Outreach Case Specialist works with DJJ Juvenile Probation and Parole Specialist to make initial appointments
  - Medical/Dental check within 10 days
  - Health Risk Screening within 30 days
- Once these items are completed, the Outreach Case Specialist's work is complete and the CC will be the primary contact



# Placements

- DFCS and DJJ retain placement responsibility and authority
- Amerigroup does not decide placement
- PRTF is considered a treatment service and not a placement
  - Children and adolescents who do not need the intensive services of a PRTF, but need a placement resource, may be referred by the Department of Human Services, Department of Juvenile Justice or Parent/Legal Custodian to Child Caring Institutions or Child Placing Agencies which are not covered under Medicaid, but are funded with State General Funds, Title IV-E funding and other private funding resources\*.

\*DBHDD PRTF Provider Manual

# Further Questions and Training

- Amerigroup is committed to providing you and your court the information you need. If you have any further need of information or training, please contact:  
[ga360trng@amerigroup.com](mailto:ga360trng@amerigroup.com)
- Generally a training can be scheduled within two weeks of the request